



# AirSupply

Upblast Exhaust Fan

**Model: E-DUC080818-1**

Revision: 01

Date: February 26, 2026

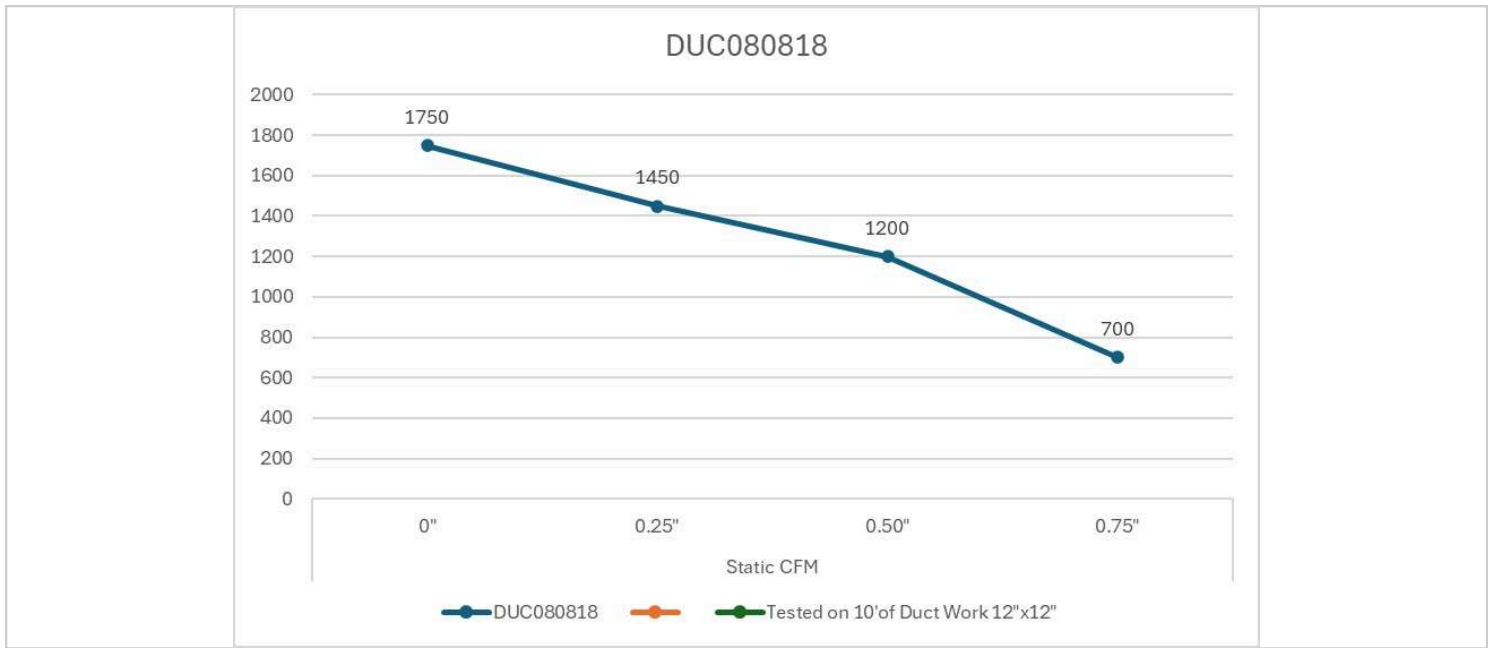
## General Description

Roof-mounted centrifugal upblast exhaust fan designed for grease-laden air applications in commercial kitchens. Suitable for continuous duty operation and compliant with applicable ventilation standards.

## Performance Data

Airflow (CFM)	1750 CFM
Fan Type	Centrifugal
Drive Type	Direct Drive
Max Operating Temperature	400F
Speed	1750 RPM

## Static Pressure Curve



## Motor Specifications

Motor Type	TEFC
Horsepower	1/3 HP
Voltage	115V
Phase	Single
Frequency	60 Hz
Insulation Class	Class F

## Construction

Housing	G.I / Aluminum
Impeller	Backward Inclined Aluminum
Base	Heavy Gauge Steel
Fasteners	Steel

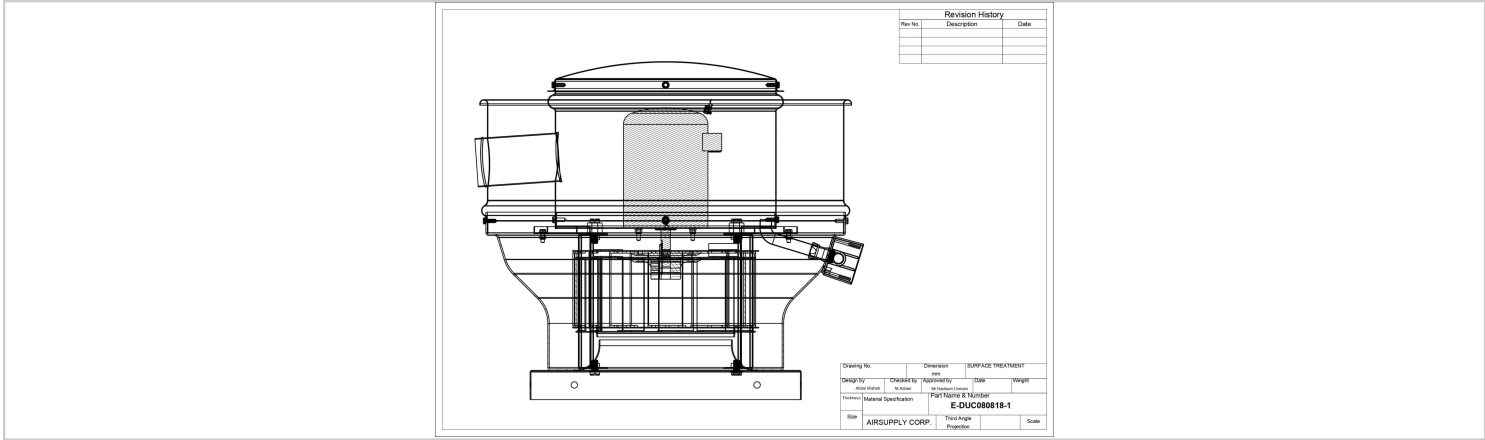
## Compliance

Standard	-
Code	-

<b>Certification</b>	-
----------------------	---

## Dimensions & Weight

<b>Fan Diameter</b>	23.7 in
<b>Base Size</b>	18 in x 18 in
<b>Overall Height</b>	22.7 in



Insert Dimension Drawing Here (PNG / CAD Export)

## Installation Notes

- Compatible with standard roof curbs
- Disconnect switch recommended
- Proper duct transition required